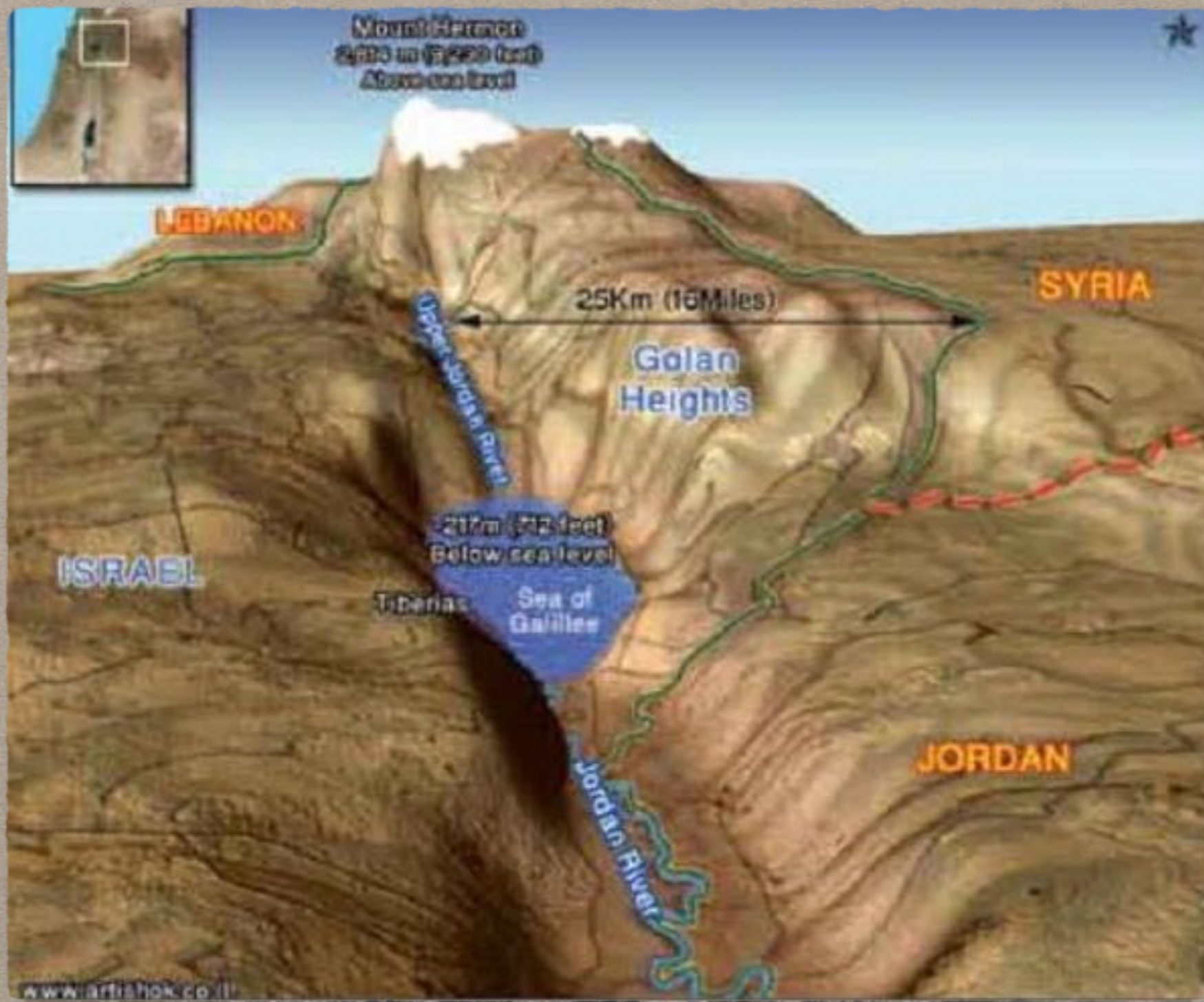


THE GEOGRAPHY OF THE HOLY LAND



CLASS FOUR
HERMON TO THE DEAD SEA



Map of Upper Galilee





HERMON, WITH ITS WHITE HEAD, IS LIKENED TO THE HIGH PRIEST WEARING HIS MITRE, ITS BLUE LACE IS LIKE THE ROBE OF THE EPHOD. HERMON'S TRIANGULAR STRIPS OF SNOW GIVE EVERY APPEARANCE OF THE BEARD OF MATURITY.



THE OTHER NAMES FOR HERMON
(DEUT. 3:9) AS GIVEN BY THE
GENTILES WERE SIRION
("TO GLITTER") AND
SHENIR ("TO CLATTER").

THE WORD FOR SIRION IS FROM
THE SAME ROOT AS
"HABERGEON" USED IN RESPECT
TO THE COLLAR
OF THE EPHOD (EXO. 28:31-32).

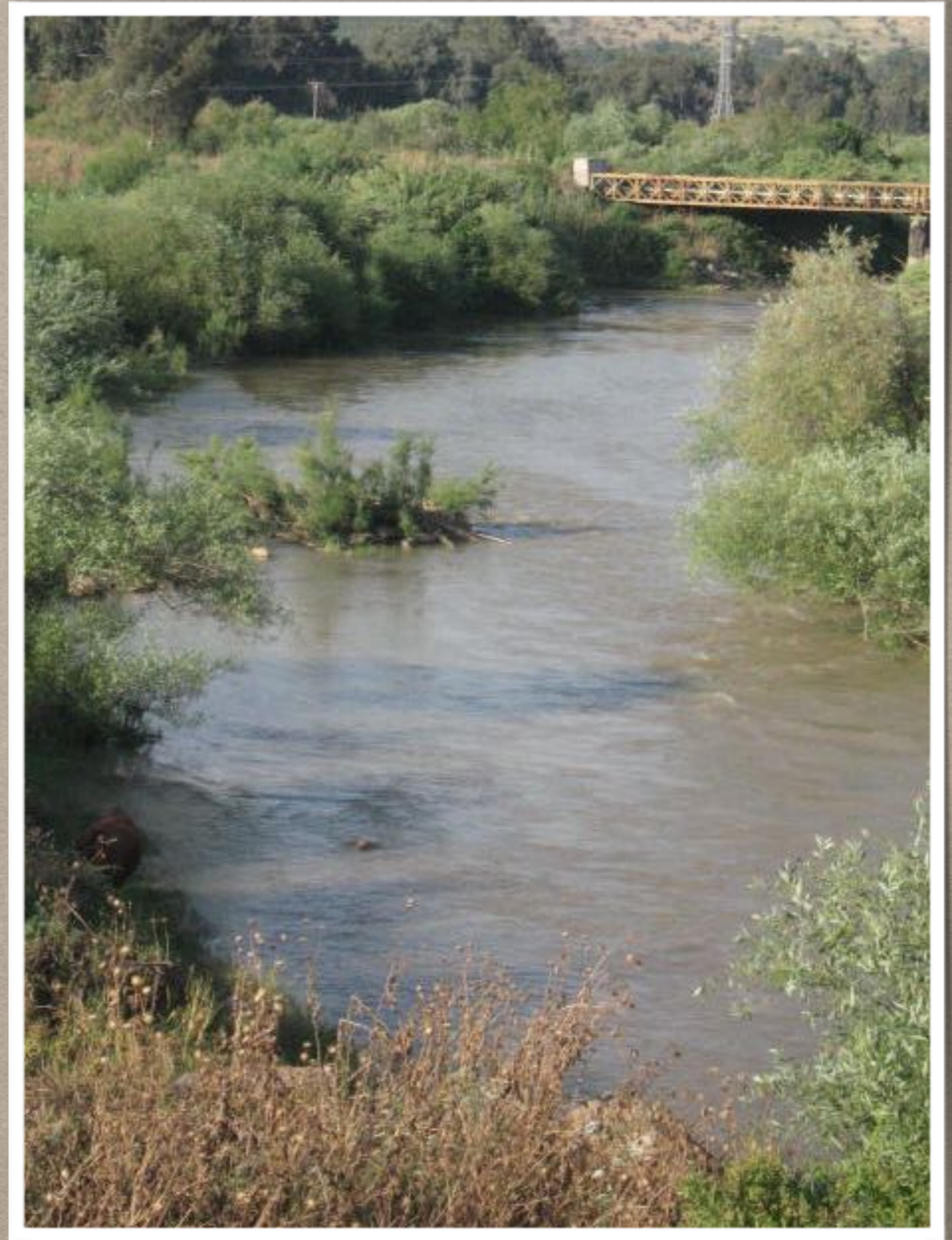








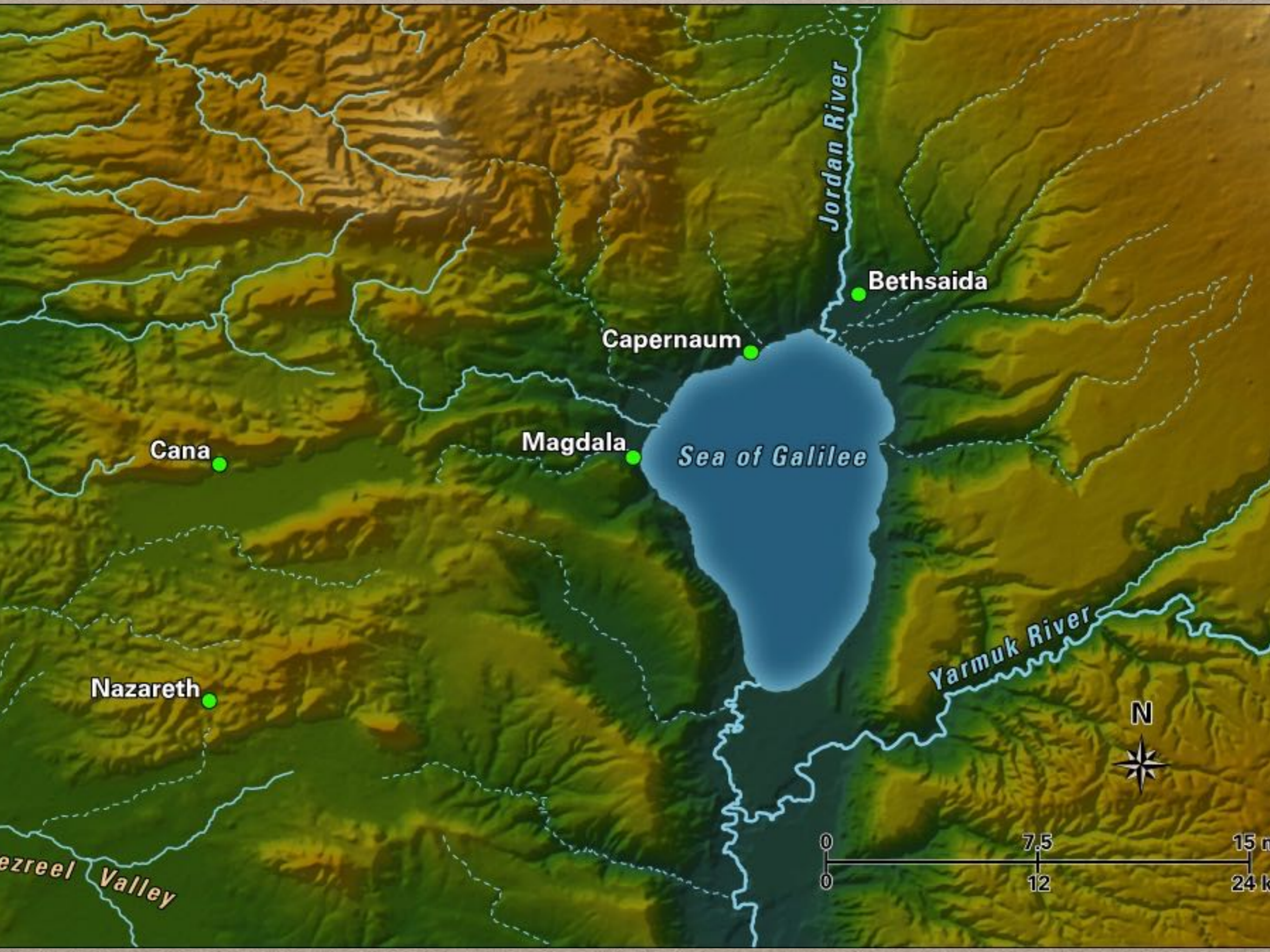
OVER A SHORT
DISTANCE OF 30 MILES
TO THE SOUTH THE
WATER HAS TURNED
BROWN AND MURKY
INDICATING MAN'S
RAPID DECLINE HENCE
THE NAME JORDAN
MEANS "DESCENDER"



Map of Upper Galilee







Cana

Nazareth

Magdala

Capernaum

Bethsaida

Sea of Galilee

Jordan River

Yarmuk River

Jezreel Valley



THE SEA OF GALILEE
(702 FT BELOW SEA
LEVEL) IS ALSO
REFERRED TO AS
"THE SEA OF
TIBERIAS"
(JN. 21:1) AND
REPRESENTS THE SEA
OF THE NATIONS
WHICH CAN ONLY BE
CALMED BY CHRIST









AS IT APPROACHES THE DEAD SEA THE
WATER OF THE JORDAN BECOMES MORE
STAGNANT AND TURGID DEMONSTRATING
MAN'S INEVITABLE DESTINY







JORDAN WAS NOTED FOR DANGER, BEING A
HABITATION FOR LIONS (JER. 49:19) AND
SERPENTS (MATT 3:7).
THE PROPHETS WARNED THOSE WHO CAME IN
CONTACT WITH IT (JER. 12:5,
ZECH. 11:3).





HAVING MADE ITS WAY TO THE DEAD SEA, MAN'S
ULTIMATE END IS NOW REALIZED IN DEATH, IN
THE LOWEST PART OF THE EARTH

ONLY BY OUR
IDENTIFICATION
WITH CHRIST CAN
THE SURE
SENTENCE OF
DEATH INHERITED
FROM ADAM BE
REVERSED
(JOSH. 3:14-17)



