

THE GEOGRAPHY OF THE HOLY LAND

CLASS FIVE
JERICHO TO JERUSALEM



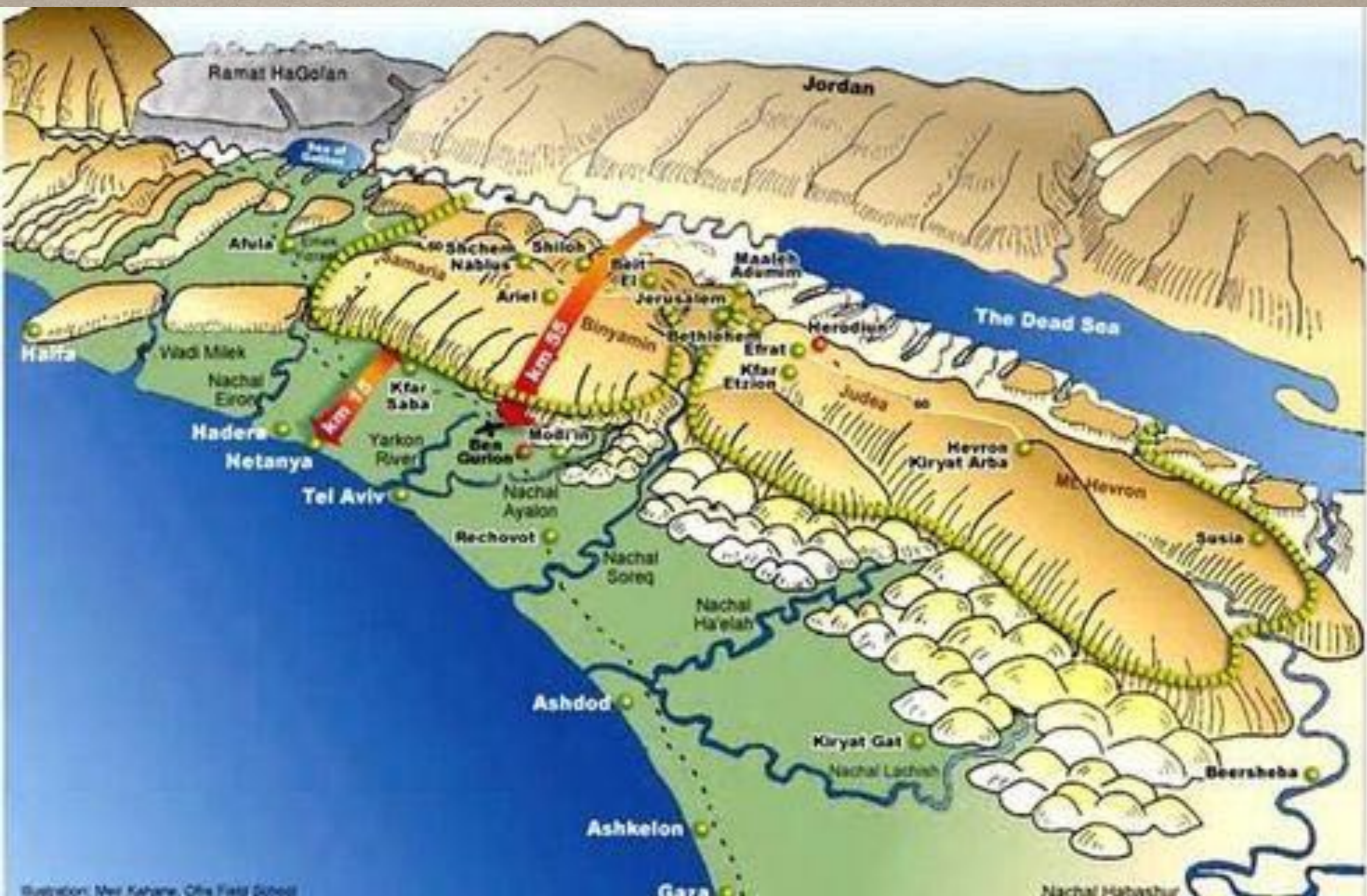
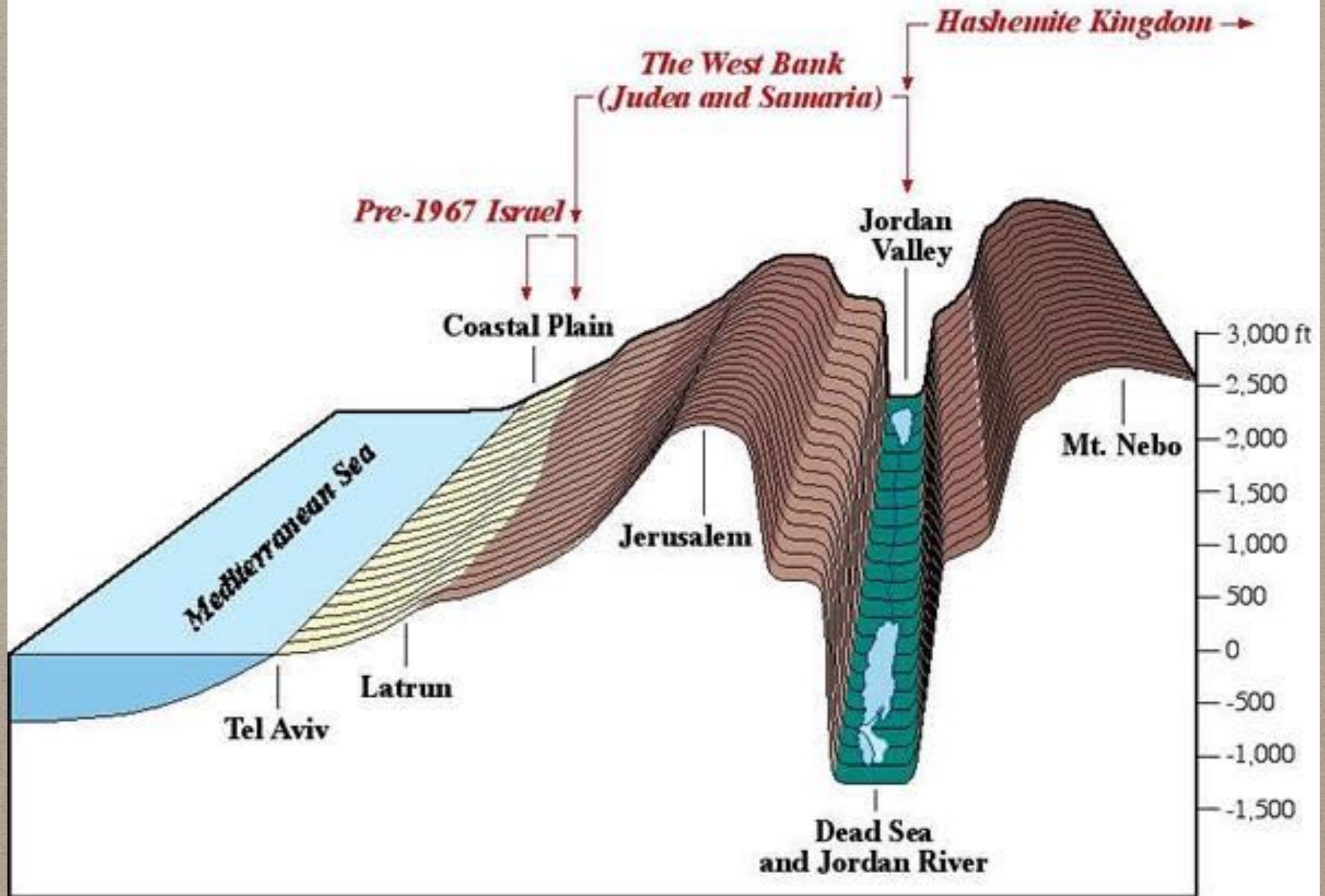


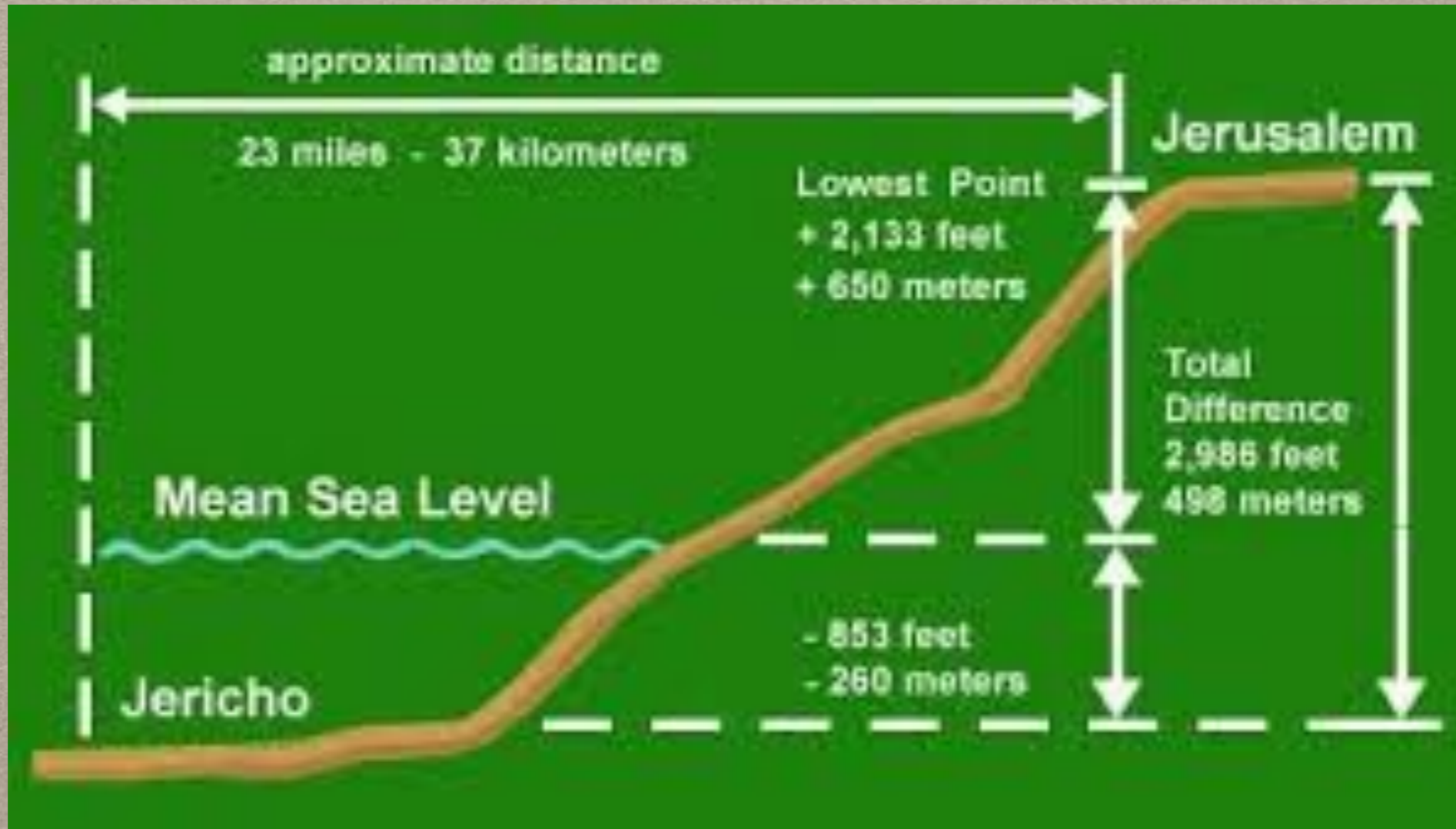
Illustration: Meri Kahane, Ofra Field School

Map 7: Topography and Israeli Security: Utilizing the 4,200-Foot Mountain Barrier to Protect Israel's Vulnerable Coastal Plain



45 miles

CITY OF THE CURSE TO THE CITY OF GOD



FACTS ABOUT JERICHO

- Typified whole land of Canaan (Josh. 24:11)
- A curse was placed upon it (Josh. 6:17)
- Signifies "fragrance"
- Noted for palm trees (Deut. 34:3, Gentiles)
- Bitter waters made sweet by Elisha (2 Kgs. 2:19-22)
- Blind Bartimaeus, the son of Timaeus (Mk. 10:46)





↑ جبل التجربة
(دير قنطل)
Mount of Temptation



1

ירושלים

اورشليم (القدس)

Jerusalem

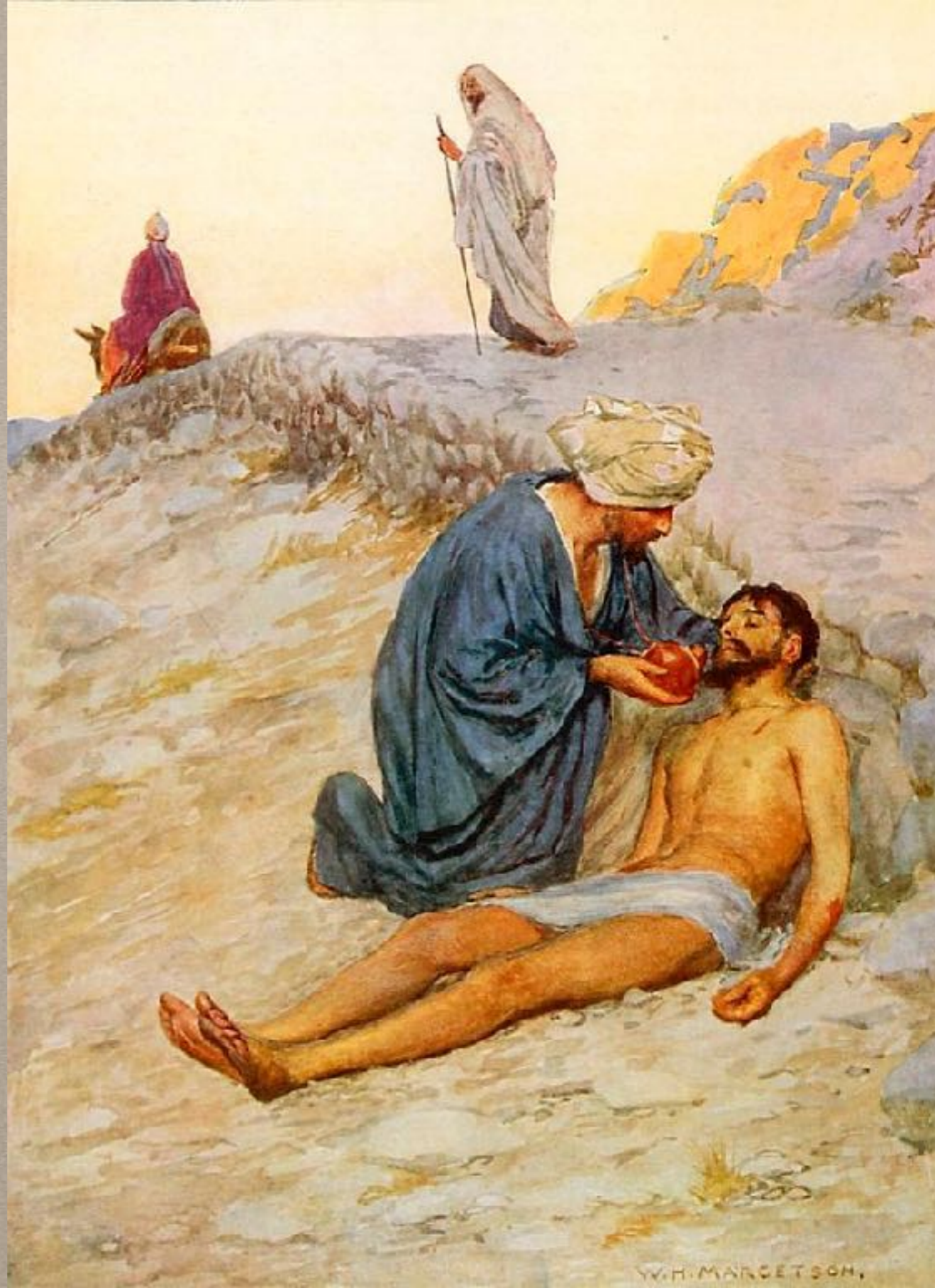
מעלה אדומים

مَعَلِي ادوميم

Ma'ale-

Adummim

- Samaritan - Our Lord (Jn. 8:48)
- Journeyed - took the same road as us (Heb. 2:14)
- Bound up - forgiveness (Isa. 61:1)
- Inn - Ecclesia
- On the morrow he departed - Spent the evening (death)
- Two pence - Approximate value of a 1/2 shekel (Ex. 30:13, Redemption)
- When I come again, I will repay - 2nd Coming





124A



Temple Mount

Mount of Olives

Bethphage

Bethany



- In the Lord's final week he set his face towards Jerusalem seeking to unite all men on the basis of his sacrifice
- Coming first to Beth-phage (house of figs, the Jews)
- Then to Bethany (house of dates, the Gentiles)
- Sends forth two disciples to find two animals in a place where two ways met
- Spreading palm branches (Feast of Tabernacles)
- Promise of a House of Prayer for all nations





"EVEN SO COME, LORD JESUS!"